



## HELLO!

We are so excited to see friends we haven't seen since June and meet our new friends! We would like to introduce our Primary Teachers this year:

*Ms. Diana, Ms. C, Ms. Cindy, Ms. Vanessa*

## NEWSLETTERS

Newsletters will go out at the beginning of every month. They contain important information and reminders so please read them thoroughly.

## SCHOOL YEAR CALENDAR

Every family will receive an updated school year calendar digitally and a hard copy which will be placed in your child's mailbox.

## SCHEDULES

Please note that due to an increase in enrollment there may not be spots available to do a schedule change but you may increase your hours. If you would like to change or increase days that are unavailable, you can notify us and we will place you on a waitlist. Enrollment and change of schedules are based on a first come, first served basis thus we will notify families on the waitlist of available schedules in the order they were placed.

## DONATIONS (Amazon Wishlist)

[https://www.amazon.com/hz/wishlist/ls/2LUPZARO82TJT?ref=wl\\_share](https://www.amazon.com/hz/wishlist/ls/2LUPZARO82TJT?ref=wl_share)



## CLASS SCHEDULE

7:30-9 Before School Program

9-9:30 Drop off / Circle Time

9:30 Outside group 1 / Snack group 2

10 Outside group 2 / Snack group 1

10:30 Work Period

11:45 Noon dismissal Circle

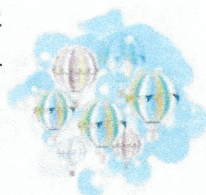
12 Lunch / Play

1-3 Naptime (**must bring blanket/pillow and take home for wash between each week**)

1-2 Kinder: Big Kids Playground

2-3 Kinder: Lessons

3-530 After School Program



## MONTESSORI MATERIALS

Wooden Montessori materials have been put away due to not being able to sanitize the materials thoroughly without damaging the materials. Materials and lessons will be introduced to students at circle time but materials will be unavailable to students until further notice.

## COVID PROTOCOLS

- Only one family is allowed inside our facility at a time.
- Families are not allowed to go beyond our **green good-bye line**.
- All students are required to have their **temperature checked** at drop-off prior to families leaving.
- **Masks** are required for all students.
- Any student showing signs of **illness** must stay home. Any student that shows/develops symptoms will be sent home.
- Families must notify staff through Brightwheel of any **absences** and clarify if it is due to illness.

## BRIGHTWHEEL

- **Brightwheel messages may ONLY be sent between the hours of 7:00 AM to 6:00 PM.** Any messages that need to be communicated outside of those hours must be emailed to Ms. Vanessa:

[Vanessa@NapaValleyMontessori.com](mailto:Vanessa@NapaValleyMontessori.com)

- All staff members are able to see Brightwheel messages. If you have confidential information or concerns to share, please email Ms. Vanessa.
- If permission was given, staff may send you **photos** of your student from time to time.
- All **incident reports** are recorded in Brightwheel
- The fastest way to contact the school staff in regards to your student is messaging us through Brightwheel.

